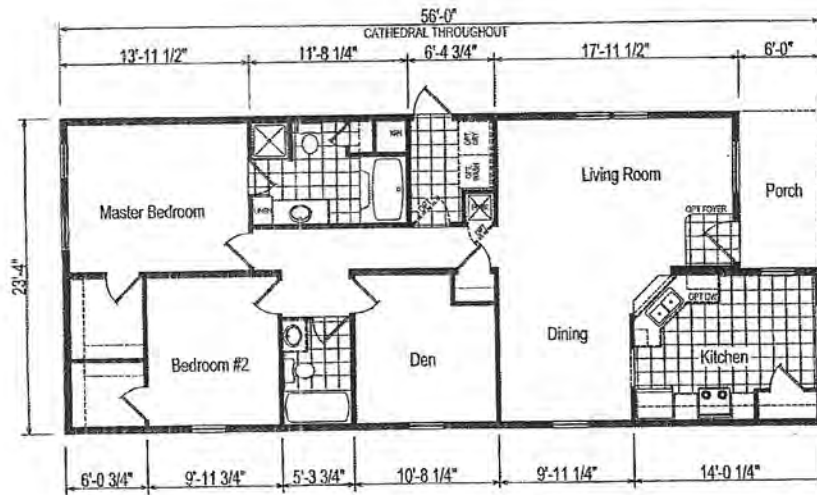


HERITAGE HOMES

2771 Lincoln Highway East, Ronks, PA 17572
 Phone 717-687-8625 / Toll Free 1-800-641-7743



"Open House Price"
\$69,900

**Sale Price
 As Shown
 \$81,774**



110 Madge Drive, Young's MHP, Lancaster, PA
 Model 60G156 – SN# 0522 – 2 Bedroom, 2 Bath
 Dimensions: 24' X 56' - Approximately: 1306 Sq. Ft

ADDITIONAL OPTIONS INCLUDED

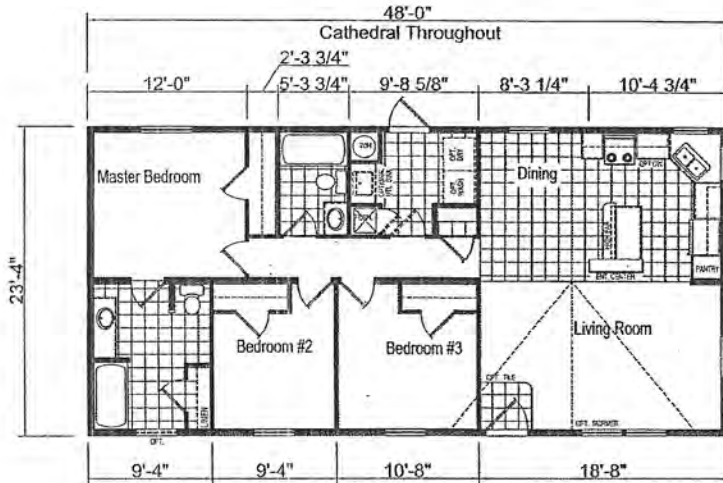
Ceramic Tile Backsplash t/o	6' Front Porch	Seasonal Comfort Package
Dishwasher	24" Skylight	Deluxe Chandelier
Exterior Faucet	Tub Drapes	Textured Ceiling
Linoleum Foyer	French Doors	Bedroom Ceiling Lights
(2) Cable Jacks	Single Lever Faucet	Accent Panel Upgrade
Programmable Thermostat	Upgrade Carpet t/o	32" 9-Lite Rear Door
Lighted Ceiling Fan – Kitchen	(2) Phone Jacks	60" 1 Pc. Tub

This Home Qualifies For The "HERITAGE MAKING HOMES AFFORDABLE" Program

Revised 12/22/10

HERITAGE HOMES

2771 Lincoln Highway East, Ronks, PA 17572
 Phone 717-687-8625 / Toll Free 1-800-641-7743



"Open House Price"
\$64,900

**Sale Price
 As Shown
 \$75,626**



138 Madge Drive, Young's MHP, Lancaster, PA
 Model 52G351 – SN# 0800 – 3 Bedroom, 2 Bath
 Dimensions: 24' X 56' - Approximately: 1120 Sq. Ft

ADDITIONAL OPTIONS INCLUDED

American Cherry Cabinets	Accent Panel Upgrade	Programmable Thermostat
8' Front Porch	Textured Ceiling	Dishwasher
Linoleum Foyer	Seasonal Comfort Package	Vertical Door Blinds
Sliding Glass Door	Tranquil Bath	Bedroom Ceiling Lights
Lighted Kitchen Ceiling Fan	Furnace Door	Deluxe Exterior Light
Deluxe Chandelier	Recessed Can Light	Exterior Faucet
(2) Cable Jacks	(2) Phone Jacks	Canopy Tub Drape
Utility Sink	60" 1 Pc Tub/Shower	Fluted Mirror Trim
Raised Kitchen Sink		1 Pr Pedestal Legs

This Home Qualifies For The "HERITAGE MAKING HOMES AFFORDABLE" Program

Revised 12/22/10

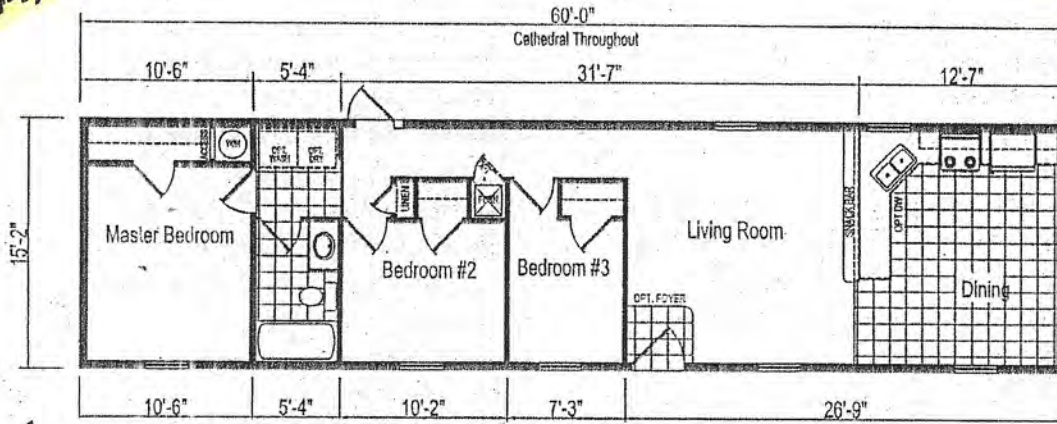
HERITAGE HOMES

2771 Lincoln Highway East, Lancaster, PA 17572
 (717) 687-8625 or (800) 641-7743

55 Madge Drive
 Youngs MHP, Lancaster, PA

"Open House Price"
\$44,900

"Open House Price"
\$44,900



ORIGINALLY
\$51,539

Model ERH-64S501
 3 Bedroom, 1 Bath
 Dimensions: 16' x 60' – Approximately 960 Sq.Ft.

Featuring The All New

EAGLE RIVER HOMES

Additional Options Shown

Vinyl siding & shingle roof	\$2375	Bedroom ceiling lights	\$ 75
Ceramic tile backsplash	\$ 169	(2) phone jacks	\$ 70
Dishwasher	\$ 390	(2) TV jacks	\$ 70
36" steel front door	\$ 235	60" 1 piece tub	\$ 199
Furnace door	\$ 55	Tub drape	\$ 45
24" skylight	\$ 165	Cabinet over refrigerator	\$ 119
White ceiling fan	\$ 135	Double utility cabinet	\$ 90

Site Improvements Included

Footers	(2) sets fiberglass steps	Anchors
Spouting	Skirting	Building Permit

TO DO OUR BEST...IS THE LEASET WE CAN DO