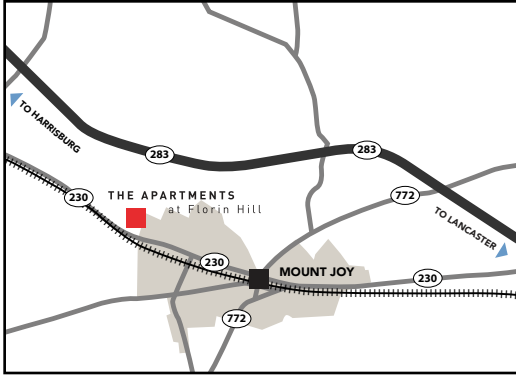
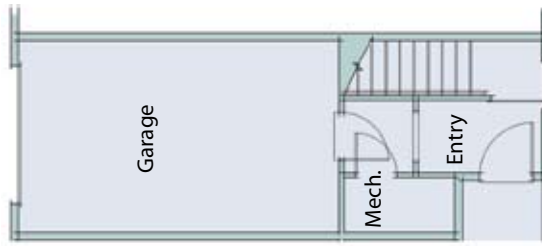


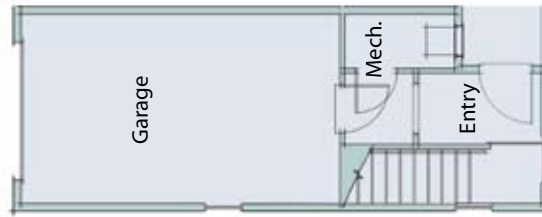
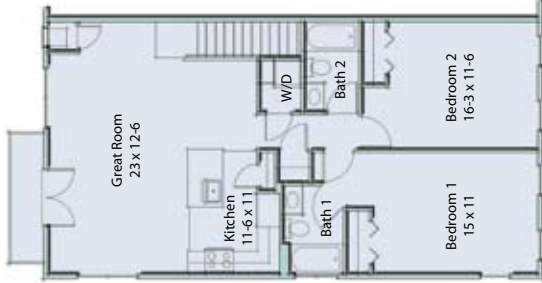
LOCATION



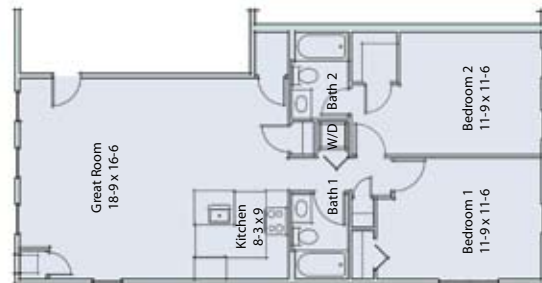
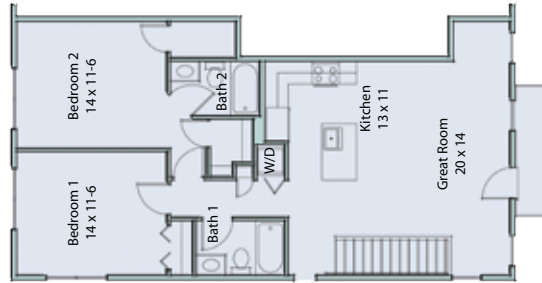
The Apartments at Florin Hill are located 5 minutes from Route 283 providing easy access to Lancaster, Harrisburg, and York.



Sample "Village Loft"
Penthouse With Garage



Sample "Village Loft"
Floor Plan A With Garage



Sample "Main Street"
Floor Plan

THE APARTMENTS at Florin Hill



1013 West Main Street, Suite 5
Mount Joy, PA 17552
(717) 492-0005
www.rentpmi.com/florinhill
Mondays, Tuesdays & Fridays 9 AM - 6 PM
Saturdays & Sundays 9 AM - 4 PM
Wednesdays & Thursdays by appointment

FEATURES

- Brand New 2 Bedroom Apartments
- Exceptionally Stylish Apartment Homes
- 5 Minutes To Route 283, Easy Access To Lancaster, Harrisburg & York
- Walk To Retail Shops And Dining
- Premium Oversized Windows
- Pastoral Lake Views, Or Urban Main Street
- Whirlpool Appliances
- Washer & Dryer Included
- Walk-in Closet
- Attached Garages Included (Most)
- Pets Accepted (With Restrictions)
- Brushed Nickel Light Fixtures And Hardware
- Two Full Baths In Each Apartment Home
- Balconies
- 24-Hour Emergency Maintenance
- Professional Management On Site



The Apartments at Florin Hill. Nothing else compares to our brand new, exceptionally stylish apartment homes situated within a unique brand new neighborhood. A place that is thoughtfully designed to feature not only residential living, but also new “walk-to” retail shops, personal services, dining, and more all within the same inviting neighborhood.

Perfectly situated with easy access to greater Lancaster, Harrisburg, and York and also nearby to the quaint village center of Mount Joy Borough, living in the Apartments at Florin Hill offers so much to your quality of life. The cozy streets, acres of green space, walkable shops and the other amenities are artfully designed and beautifully maintained for all to share. But the thing that most neighbors rave about our community? The View!

The choice is yours: a hip urban retreat on Main Street, or a picturesque “get away from it all” loft on the Florin Hill Commons where pastoral scenes or tranquil water views prevail. Either way your brand new apartment home will feature designer touches such as brushed nickel light fixtures and hardware, premium windows that stretch closer to both floor and ceiling in order to capture more natural light, six panel doors, premium wood trimwork, and Whirlpool appliances.

Tired of the color beige? At Florin Hill your apartment home will feature warm and unique neutral tones where upgraded colors coordinate between all features including the countertops, the cabinetry, the carpet, and the kitchen and bath floors. The Apartments at Florin Hill are simply better and must be seen in order to experience the difference that sets our unique neighborhood apart from the rest. The attention to detail, and a thoughtful approach to living well. The Apartments at Florin Hill feel like home.

Ask About “Rent To Own”

